



SANATANA DHARMA COLLEGE

ALAPPUZHA

Affiliated to the University of Kerala
Reaccredited by NAAC with A+ grade



CRITERION 4

INFRASTRUCTURE AND LEARNING RESOURCES

4.2.1

LIBRARY AS A LEARNING RESOURCE



DECLARATION

Sree Chithira Thirunal Library, Sanatana Dharma College, Alappuzha is the most valuable learning resource of the institution. It houses a vast collection of books, journals, and e – resources. The following report elaborates on the infrastructure facilities, e – resources, functioning and fund utilization of the library.



Prema

Prof. (Dr.) PREMA K.H
PRINCIPAL
PEN 457693
S D COLLEGE ALAPPUZHA



SREE CHITHIRA THIRUNAL LIBRARY

SANATANA DHARMA COLLEGE ALAPPUZHA

CONTENT PAGES

| SI No. | Topic | Page Number |
|--------|-------------------------------------|-------------|
| 1 | Introduction to the library | 2 |
| 2 | Floor Plan and Pictures of Sections | 3 |
| 3 | Services | 6 |
| 4 | Library Automation | 7 |
| 5 | E- Resources | 8 |
| 6 | Amount Spent on Books and Journals | 9 |
| 7 | Library Usage | 10 |





INTRODUCTION TO THE LIBRARY

General Library of Sanatana Dharma College established in 1946 along with SD College. The rich history of library is reflected on its collection of books which includes rare Sanskrit books, good number of foreign titles on Science and Arts and also plenty of Reference Source which includes Encyclopedia Britannica, Encyclopedia Americana, Complete set of Oxford Dictionary, Complete works of Mahatma Gandhi etc. It spreads in an area of 13,000 sq ft. The library is located in a separate building with three big areas (Two for Stack Rooms and one for reading and reference). The library is situated very close to the main block and also the centre of the campus. The library currently holds more than 59,000 volumes, 45 periodicals, CD ROMS/ DVD ROMs, etc.

Of late the library has entered into the era of automation, digitization and electronic access to books and journals. The library is subscribing to more than 2,00,000 eBooks, ten thousand 10,000+ e-journals and other digital resources. The library is fully computerized with barcoding technology of all books and membership cards. The library is providing remote access to library catalogue and e-resources. The user credentials are printed in the membership cards issued.

The library is kept open on all working days including Saturdays. The working time of the library is 9.30 AM to 4.30 PM without any break in between. Thus, the access to the library is ensured for both students and staff at any time. Selected books are kept as reference throughout.

PG Students and Researchers are allowed to issue 4 books at a time while the UG students are having a borrowing limit of 2 books. The books are issued for a period of 14 days with one renewal for 7 days.

The library has a WhatsApp group for more than 1000 users and regularly gives updates and information. The latest news related to library activities, news on different academic subjects, campus news etc are provided to the subscribers.

The library is conducting regular user training programmes for electronic access to digital resources and other search methods. The students are giving guidance to the proper use of software/apps to read e-books / journal content. The library is giving orientation on various MOOCs sites and other facilities for online lifelong learning and information literacy.

The library is providing training sessions to researchers on Reference Management Software and Plagiarism Software facilities. The library has institutional access to Drillbit Plagiarism software.

Security of the books and other materials are ensured using mesh covered windows, CCTV cameras and intelligent design of various sections.

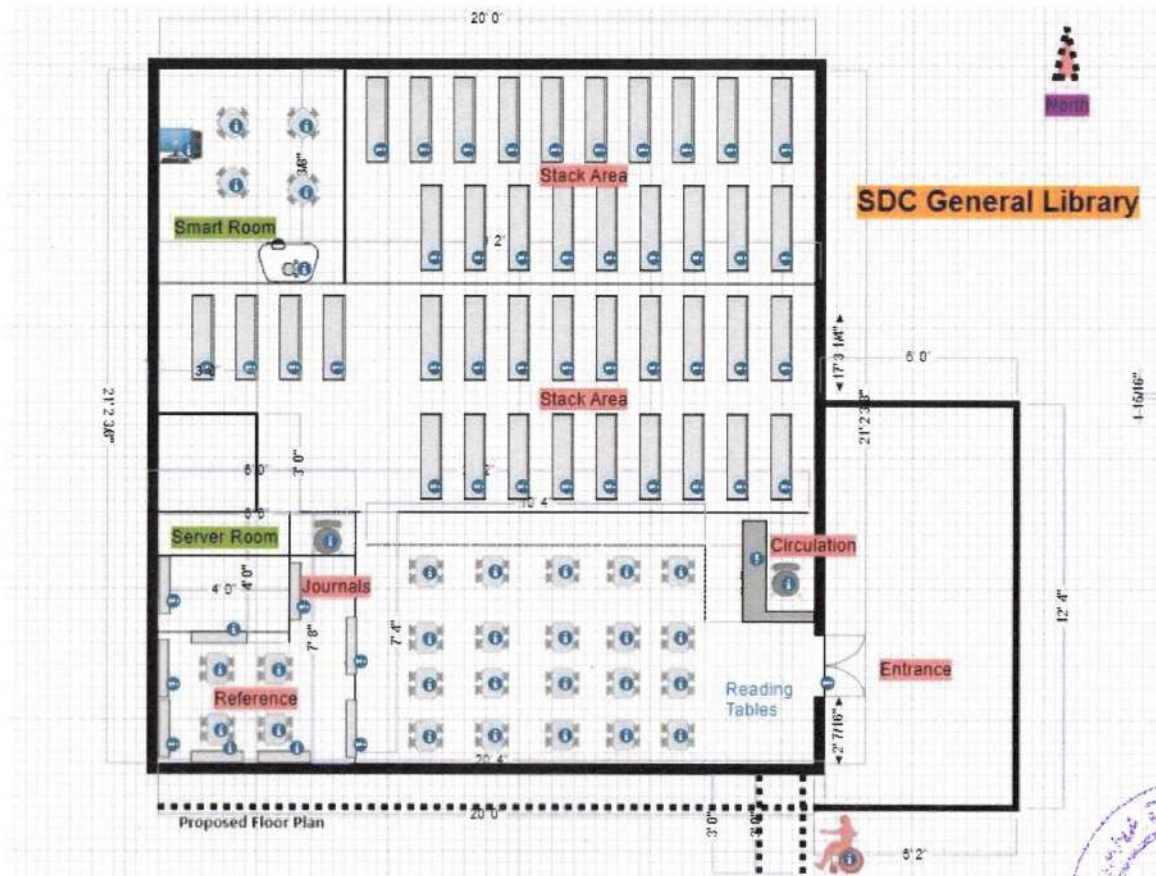




LIBRARY PROFILE

| Sl No. | Item | Numbers |
|--------|---------------------|------------------------------|
| 1 | Books | 59420 Volumes / 48962 Titles |
| 2 | E-Journals | 6500+ |
| 3 | Periodicals | 30 |
| 4 | News Papers | 16 |
| 5 | DVD/CD ROMs | 120 |
| 6 | Reference Books | 6530 |
| 7 | Rare Sanskrit Books | 420 |

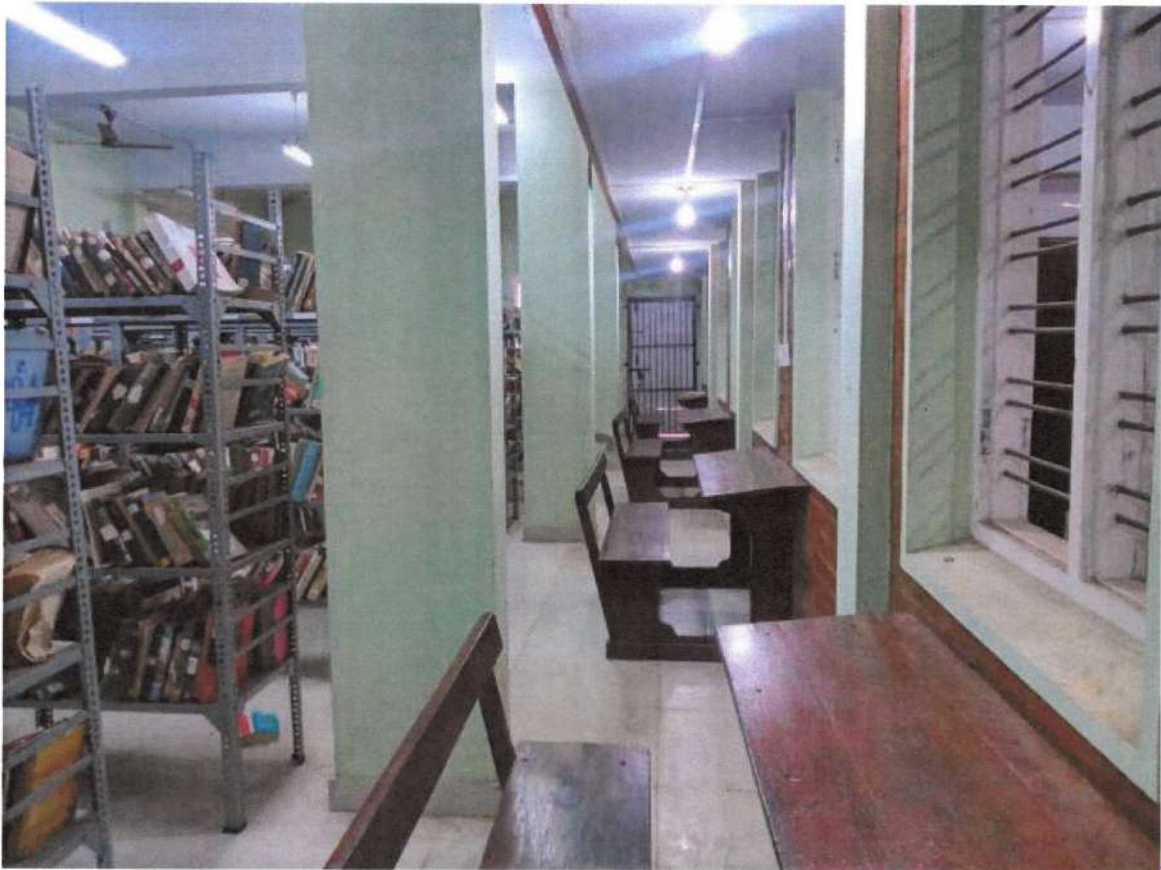
FLOOR PLAN AND PICTURES OF SECTIONS





SANATANA DHARMA COLLEGE

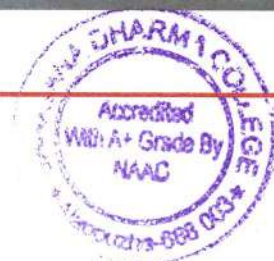
ALAPPUZHA





SANATANA DHARMA COLLEGE

ALAPPUZHA





LIBRARY SERVICES

The library is giving the following services to the users.

1. Reference Service

The library is receiving so many queries related to various academic information. The library staff helps them to locate the information.

2. Article Requests

Researchers, Teachers and Post Graduate students need articles and other electronic resources from other sources for their academic needs. The library helps them by providing the resources from University Library Access and other sources.

3. Internet and Wi-Fi Facilities

The library provides internet facilities to students using PCs and Wi-Fi spots.

4. Reprographic Facilities

The library providing reprographic facilities and scanning/printing facilities to the users.

5. New clipping services through electronic medium.

The library is regularly updating the users with latest content on their interests through WhatsApp and other social media.

6. Newspaper and Periodical Section

With a seating capacity of 150 chairs, the library provides facilities for reading and study. The periodical section gives the latest general magazines in English and regional languages, periodicals for competitive examinations, employment related magazines etc.

7. Similarity Checking (Plagiarism Detection)

The library has access to the Drillbit Plagiarism Detection Software. The service extends to UG, PG and Research Students.





8. Library OPAC

Online Public Access Catalogue is web enabled and users can access the same using their devices. Mobile access to catalogue helps them to locate books in the library all time.

9. On Demand Video Service

Being a college with a larger number of students from economically backward areas, the 'digital divide' is a reality. The library provides a humble effort to show 'On-Demand Videos' from the Internet against educational video requests. The Smart Room is providing the facility for students.

10. Assistance to LMS of the College

The library hosts the LMS Server for the college and creates users and manages content. The user training is also given against requests.

LIBRARY AUTOMATION

Library of Sanatana Dharma College is using open-source Software Koha for its library operations. Koha is an Integrated Library Management System. The library holds 59242 as its main collection. All books are available in the database of KOHA (ILMS). Issue and return of books are being carried out and maintained using barcode-technologies. All the barcodes are generated in-house using a software called 'Barcode-Magic'. The library users are also given bar-coded library cards. The open-source software Koha is configured in house and it is installed in a local server. The Online Public Access Catalogue of the library is hosted inside. It is available through the Internet also using 'static IP' technology. (library.sdcollege.in).

KOHA ILMS

Version : 3.22

Year of Installation : 2016

Server Location: Inside the library

IP Number : <http://117.250.237.35/> (Public IP points to subdomain 'library.sdcollege.in')

Agency Installed : In-house

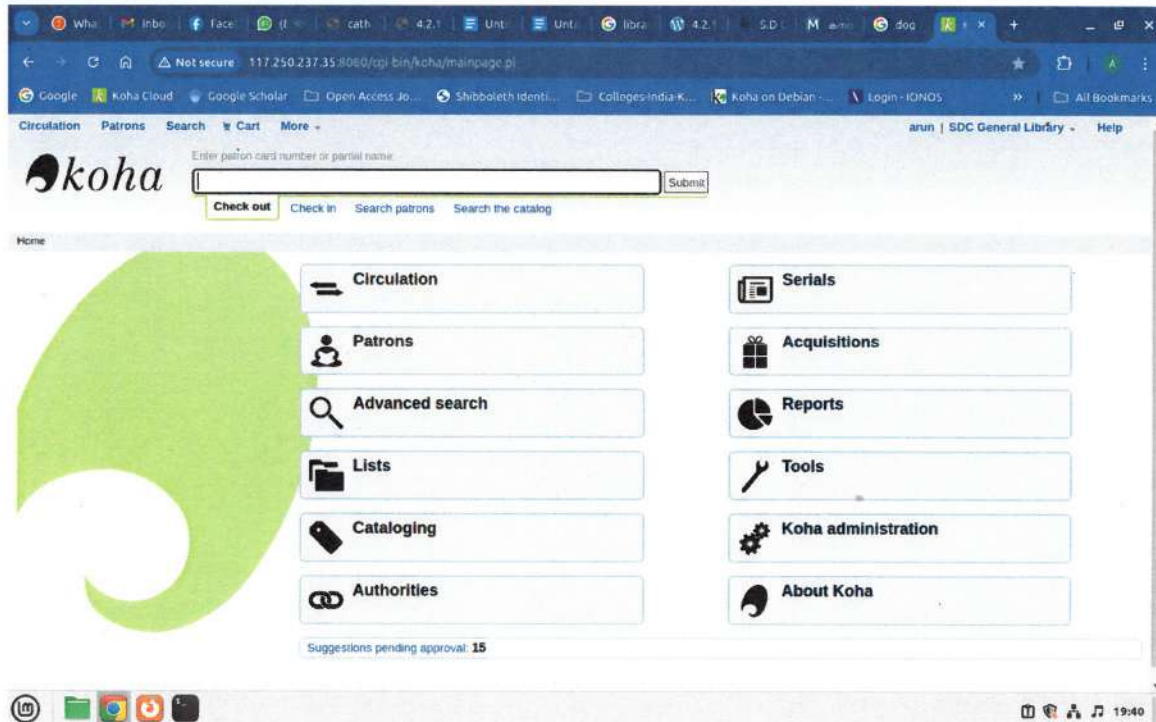
OPAC Address : library.sdcollege.in

Staff Login: <http://117.250.237.35:8080>





KOHA Interface Screenshots



E – RESOURCES

The library is subscribing to the NLIST database of UGC as its main source of electronic content. It has got 2 lakh plus eBooks and 10000 plus full-text journals. The library is providing individual user ids and passwords to all. They can access the database remotely.

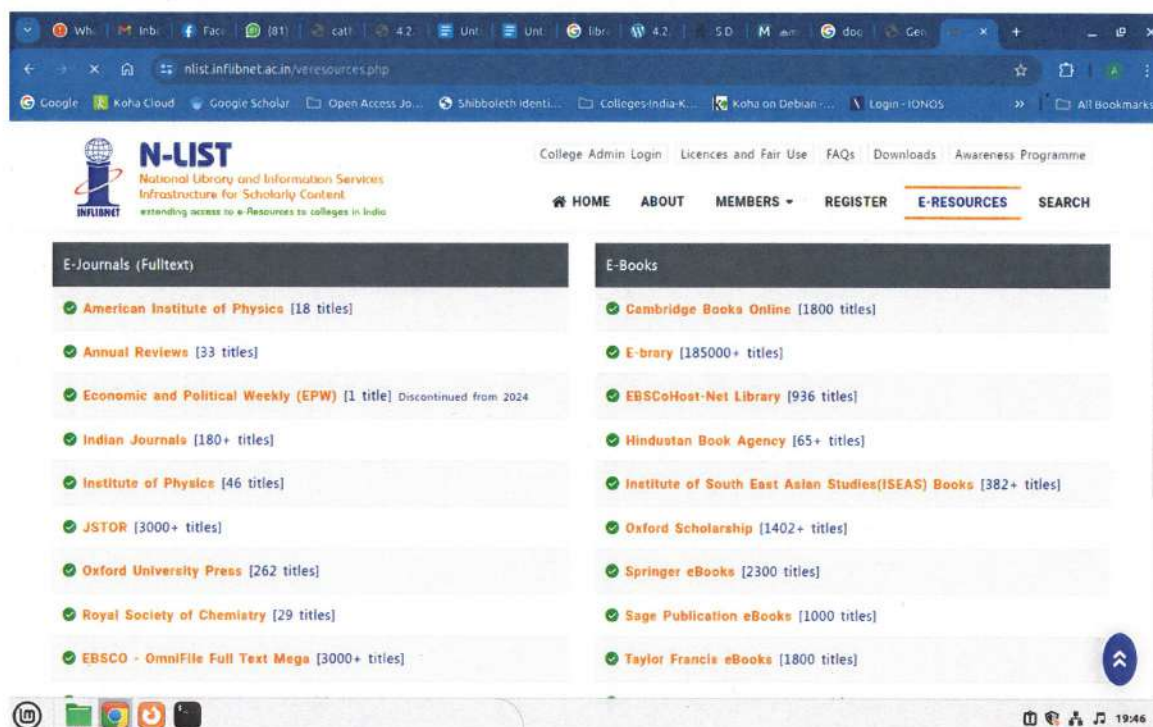
The library is hosting the Moodle LMS in-house. The library is providing previous year question papers inside LMS for the students.

The library is maintaining a subject-gateway of free internet resources for different subjects.





NLIST Database



AMOUNT SPENT ON BOOKS AND JOURNALS

| Year | 2018-2019 | 2019-2020 | 2020-2021 | 2021-2022 | 2022-2023 |
|-------------|-----------|-----------|-----------|-----------|-----------|
| Expenditure | 76335 | 183886 | 153385 | 134985 | 194385 |

(Amount in Rupees)





LIBRARY USAGE

Library Usage from 2019-2024

| Year | | Issue | Return | Renewal | Total |
|------|------|-------|--------|---------|-------|
| 2018 | 2019 | 3915 | 3758 | 1079 | 8752 |
| 2019 | 2020 | 3905 | 3997 | 2194 | 10096 |
| 2020 | 2021 | 657 | 322 | 859 | 1838 |
| 2021 | 2022 | 1183 | 419 | 1177 | 2779 |
| 2022 | 2023 | 2569 | 2677 | 672 | 5918 |
| 2023 | 2024 | 5256 | 2479 | 5328 | 13063 |

SDC Library Usage 2018-19 to 2023-24

